

## Resource 5

Diagrams of all types of mountains and of the internal structure of the earth.

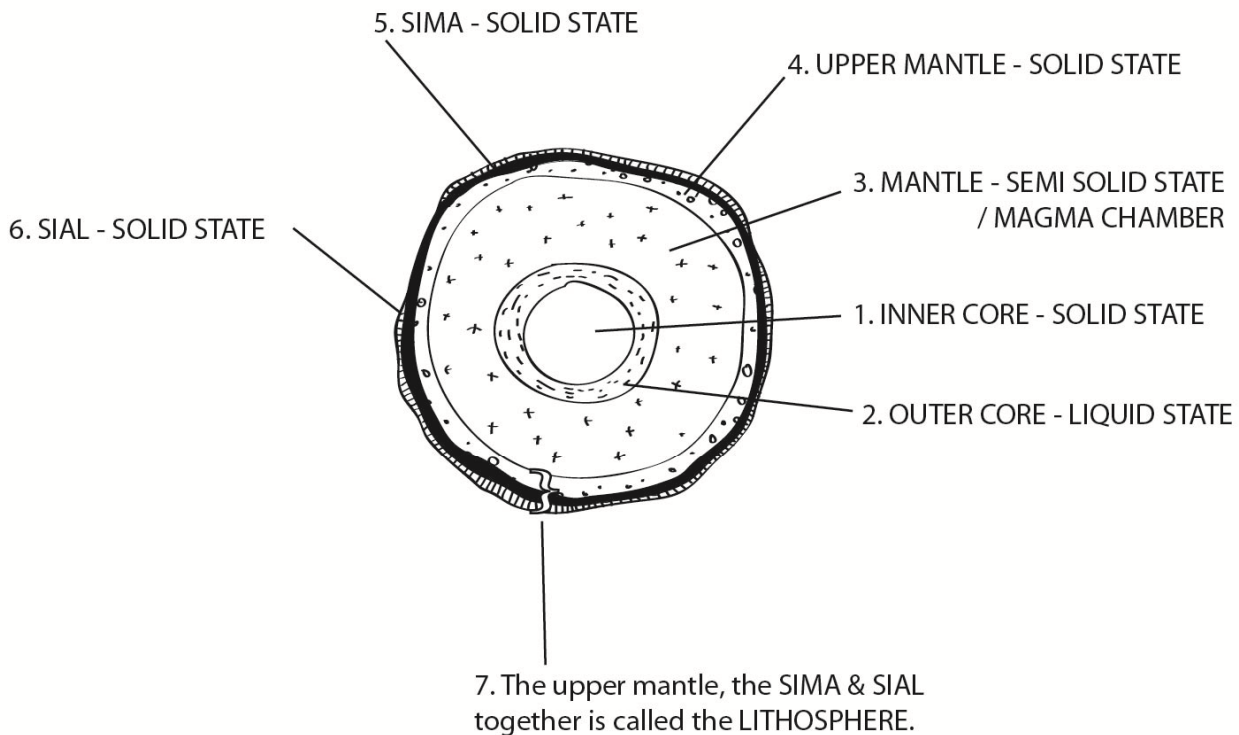


Fig:- 1. The earth's internal structure.

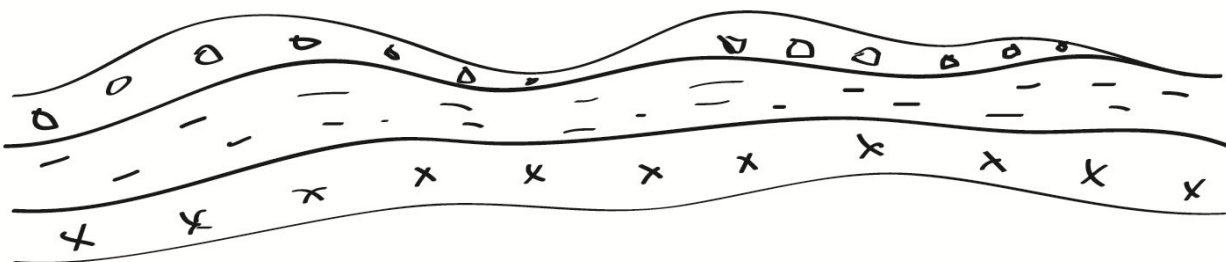


Fig :- 2. Residual Mountain - highly eroded by river glacier wind, water, temperature differences etc.



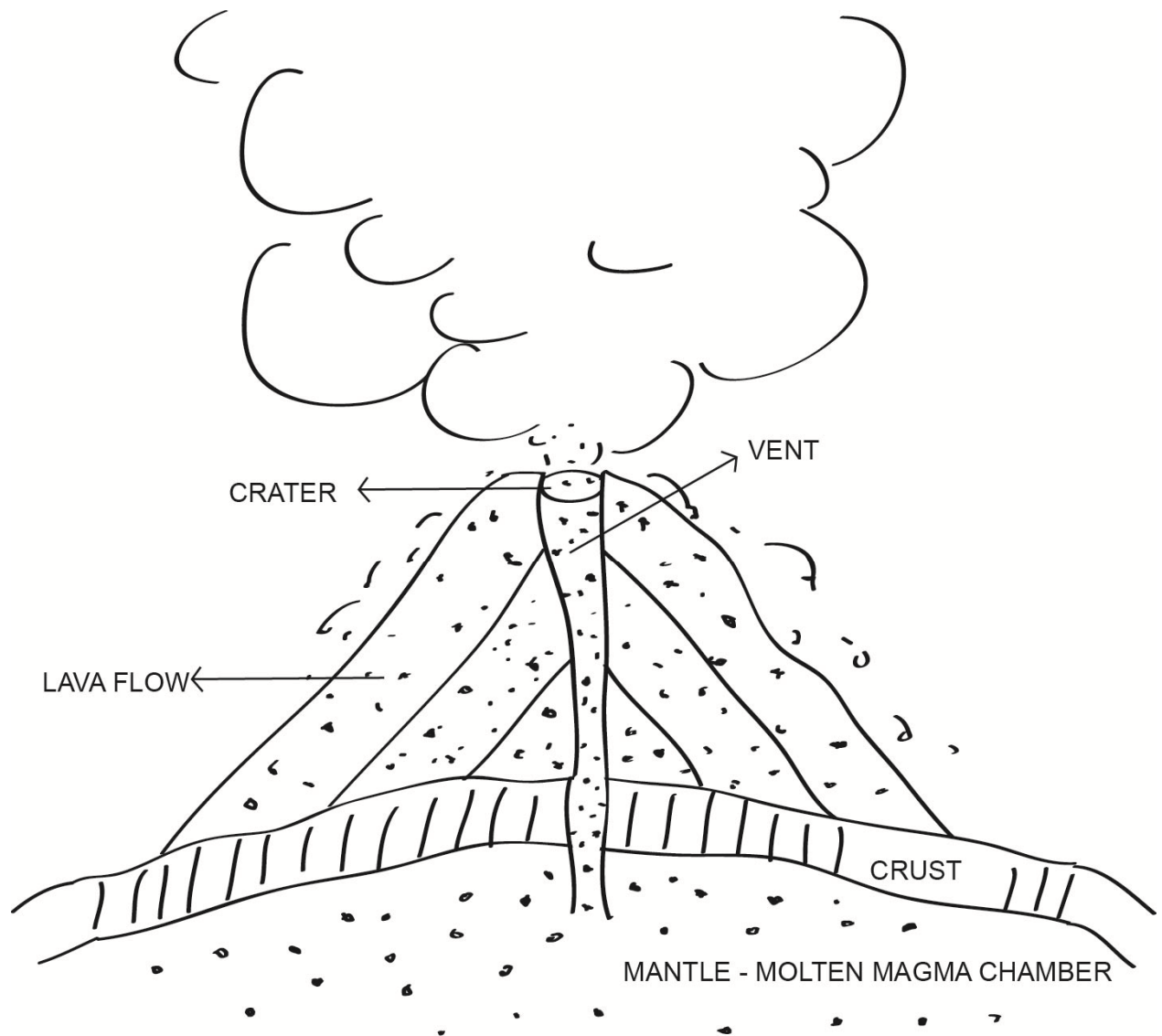


Fig :- 3. Volcanic Mountain



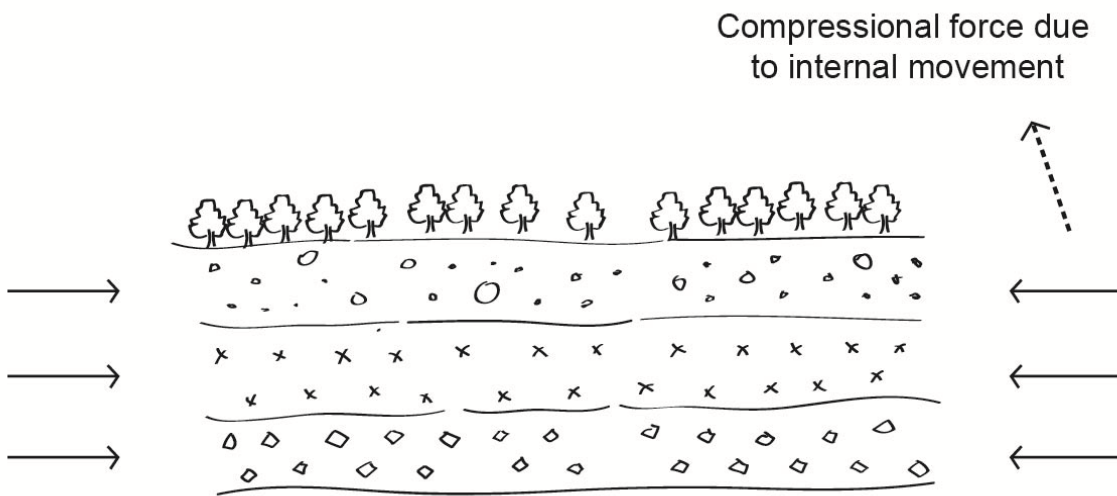


Fig :- 1a. Formation of Youngfold Mountain

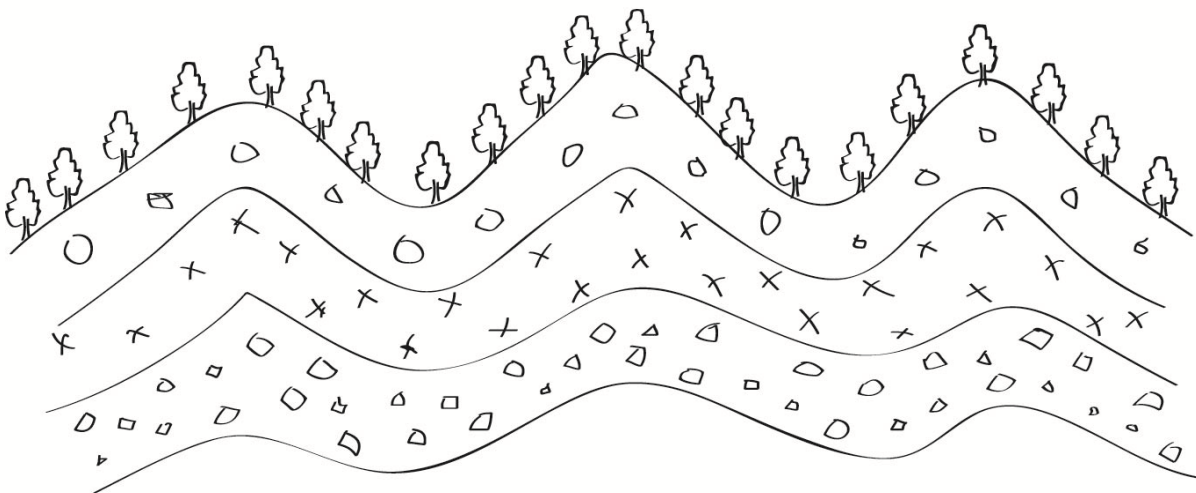


Fig :- 1b. Young fold mountain



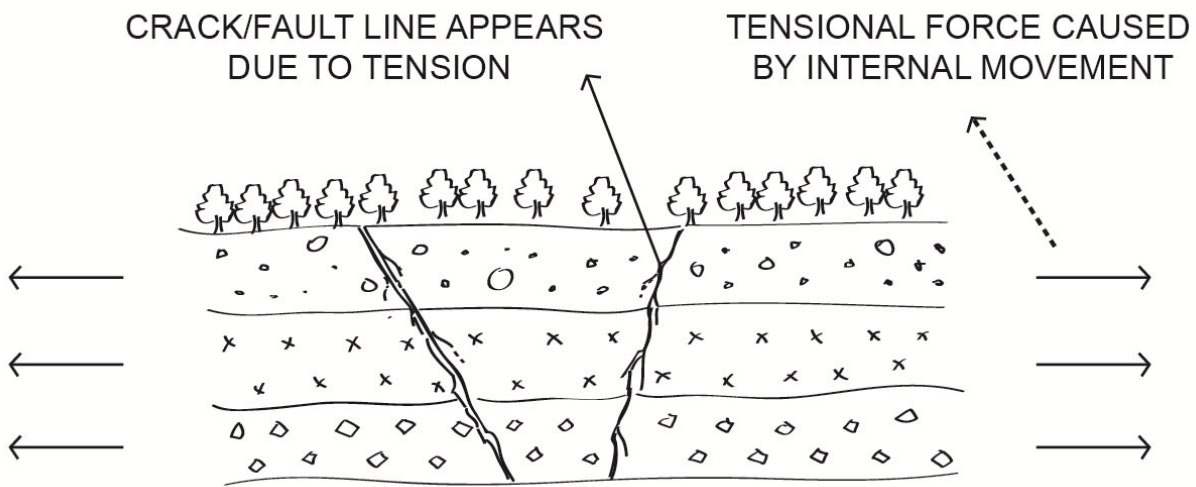


Fig :- 4a

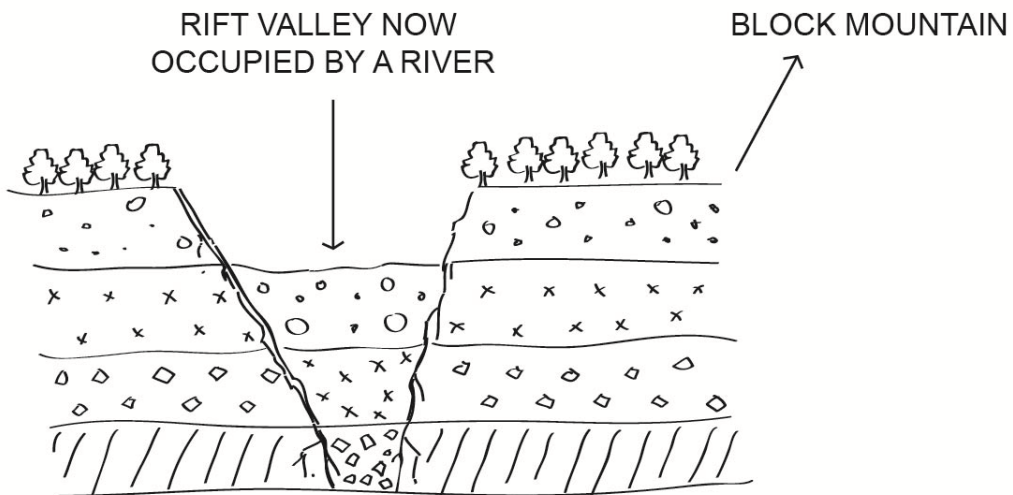


Fig :- 4b. Cracks give way to faulting, forming block mountain and rift valley

